



## KISSLING MICRO SWITCH

### Series MN8/MT8

#### Quality Switch

Our KISSLING micro switches have been specifically designed for mission critical applications with extended environmental requirements.

These high quality MN8/MT8 micro switches are precise and display both reliable and consistent switching behavior under the harshest conditions and over product lifespans of 10 million cycles. The switch has a load switching range from 0.1A up to 5A (AC). The housings are made of thermoplastic and are sealed up to IP40 depending on the configuration.

This series offers high switching security, since in operation the moving contact is activated in a cross traverse with respect to the fixed contact. This movement provides automatic self cleaning of the main contact surface and inhibits welding or sticking. These switches are intended to be used in extreme environmental conditions.

#### Features

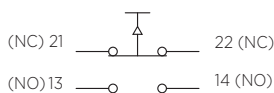
- 1- and 2-pole switches available
- Nominal load up to 5A at 250VAC
- Min. switching current 10mA at 12VDC
- Switching frequency up to 100 cycles/min.
- Variety of available actuator geometries and sizes
- High quality silver alloy or gold plated contacts

#### Applications

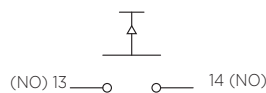
- Automotive equipment
- General mechanical engineering
- Appliance and industrial engineering
- Medical equipment
- Commercial vehicles

#### Pin assignment

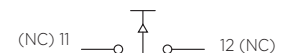
##### Change-over



##### NO



##### NC



# KISSLING MICRO SWITCH

Series MN8/MT8

## Specification

### Technical Data

Housing Material	Thermoplast GF
Interior protection	IP 40 IEC 60529
Connections	IPO0 IEC 60529

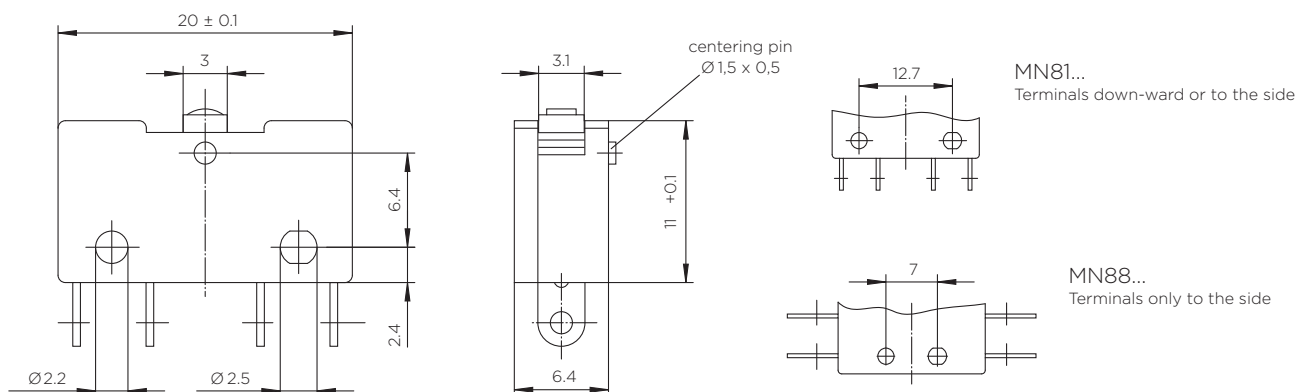
### Mechanical Data (change over contact)

Pre-travel	0.7mm - 1.2mm
Overtravel	min. 0.4mm
Movement differential	0.2mm - 0.5mm
Operating force	1.2N - 2.5N
Release force	> 0.5N
Max operating force	< 6N
Current carrying parts	CuZn-alloy
Contact material	Silver alloy or gold plated contacts
Mechanical life	10 Mio.
Frequency	max. 100/min
Operating speed	min. 0.1 mm/sec
Operating speed in direction of plunger	max. 10mm/sec
Temperature range	-40°C to +120°C
Temperature range (special edition)	-40°C to +200°C

### Electrical data

Nominal voltage / Continuous current	460VAC, 1.5A 250VAC, 5A 24VDC, 2A
Min. switching capacity	12VDC, 10mA

## Technical drawings

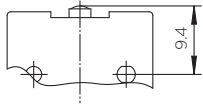


# KISSLING MICRO SWITCH

Series MN8/MT8

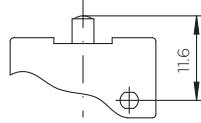
## Actuators

Plunger actuation, short



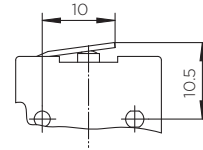
MN81 01...

Plunger actuation, long



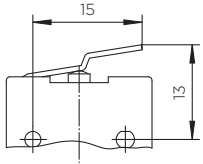
MN81 02...

Short lever



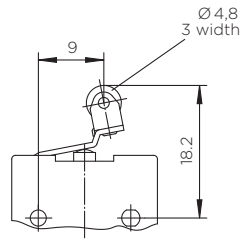
MN81 03...

Short lever



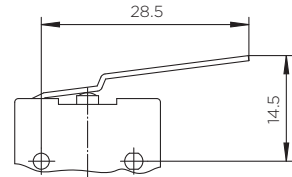
MN81 04...  
not for MT...

Short lever with roller



MN81 06...

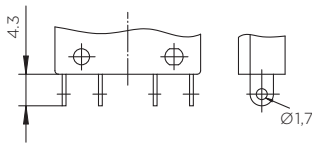
Long lever



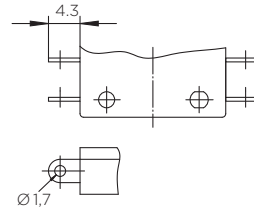
MN81 07...  
not for MT...

## Connection types

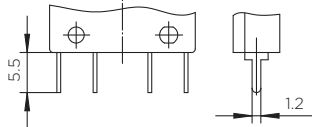
Solder Connection



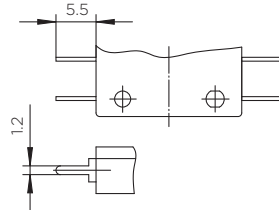
Solder Connection



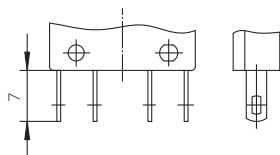
Solder tip



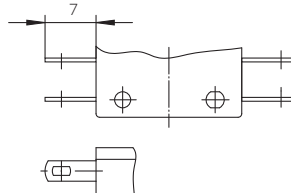
Solder tip



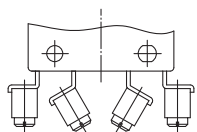
Faston terminals 2,8 x 0,5



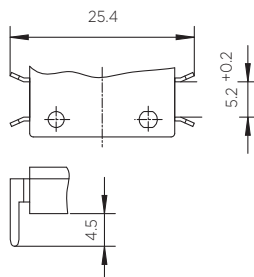
Faston terminals 2,8 x 0,5



Screw terminals M2



Solder Connection for print mounting

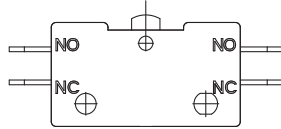
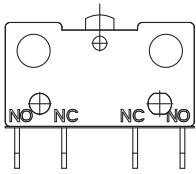


# KISSLING MICRO SWITCH

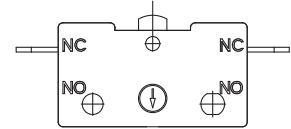
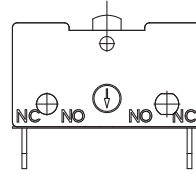
Series MN8/MT8

## Switching function

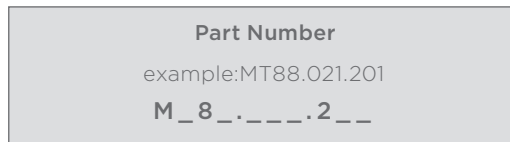
MN ...



MT ...



## Ordering Information



### Series

MN	Snap switch
MT	Creeping push with positive action (only NC)
81	Space between holes 12,7
88	Space between holes 7

### Actuator

01	Plunger actuation, short
02	Plunger actuation, long
03	Short lever
04	Short lever
06	Short lever with roller
07	Long lever

### Connection types

01	Solder connection MN81
02	Solder tip MN81
04	Faston term. 2,8 x 0.5 MN81
06	Screw terminals M2 / MN81
11	Solder connection MN88
12	Solder tip MN88
14	Faston term. 2,8 x 0,5 MN88
17	Solder conn. f. print mount. MN88

### Switching function

1	Change-over
2	NO
3	NC

## te.com

TE Connectivity, TE, TE connectivity (logo) and KISSLING (word) are trademarks owned or licensed by the TE Connectivity family of companies. All other logos, products and/or company names referred to herein might be trademarks of their respective owners.

The information given herein, including drawings, illustrations and schematics which are intended for illustration purposes only, is believed to be reliable. However, TE Connectivity makes no warranties as to its accuracy or completeness and disclaims any liability in connection with its use. TE Connectivity's obligations shall only be as set forth in TE Connectivity's Standard Terms and Conditions of Sale for this product and in no case will TE Connectivity be liable for any incidental, indirect or consequential damages arising out of the sale, resale, use or misuse of the product. Users of TE Connectivity products should make their own evaluation to determine the suitability of each such product for the specific application.

© 2020 TE Connectivity | All Rights Reserved.

K1166738 | Version 08/2020